



## **GENERAL WARNINGS AND CAUTIONARY STATEMENTS** **COLLAPSIBLE BOLLARDS**

In order to safely and effectively use any TrafficGuard Direct product, please read and understand the General Warnings and Cautionary Statements contained below. If you have any questions about any of these General Warnings and Cautionary Statements, or about any aspect of TrafficGuard Direct's products or literature, please contact TrafficGuard Direct at 877-727-7347, or email at [sales@trafficguard.net](mailto:sales@trafficguard.net).



Read and fully understand the Installation Instructions before attempting to install any TrafficGuard Direct bollard product.



Substitution of components may impair the proper function of TrafficGuard Direct bollard products. If you need replacement parts, please contact TrafficGuard Direct at the number and email above.



With collapsible bollard products, always ensure that the lock pin is locked into place whether the bollard is in the upright or down position.



**WARNING:** FAILURE TO LOCK THE LOCK PIN IN PLACE ON COLLAPSIBLE BOLLARDS MAY CAUSE THE BOLLARD TO FALL – ALWAYS LOCK THE LOCK PIN IN PLACE WITH A PADLOCK.



Replacement lock pins are available for purchase at TrafficGuard Direct. For purchase of replacement lock pins, or and other components, please contact TrafficGuard Direct at the number or email above.



**CAUTION:** LOCK PIN MUST ALWAYS BE SECURED WITH PADLOCK WHEN BOLLARD IS UPRIGHT OR IN DOWN POSITION.



For Maximum effectiveness of TrafficGuard Direct bollard products, be sure to properly maintain bollards by replacing any damaged, corroded or missing components, and reapply paint as required to maximize visibility.




In order to ensure visibility of bollards, be sure to apply all decals that are provided with the product, and in the manner recommended by TrafficGuard Direct.

If in doubt **CALL** Traffic Guard Direct 877-727-7347

INSTALLATION INSTRUCTIONS FOR:

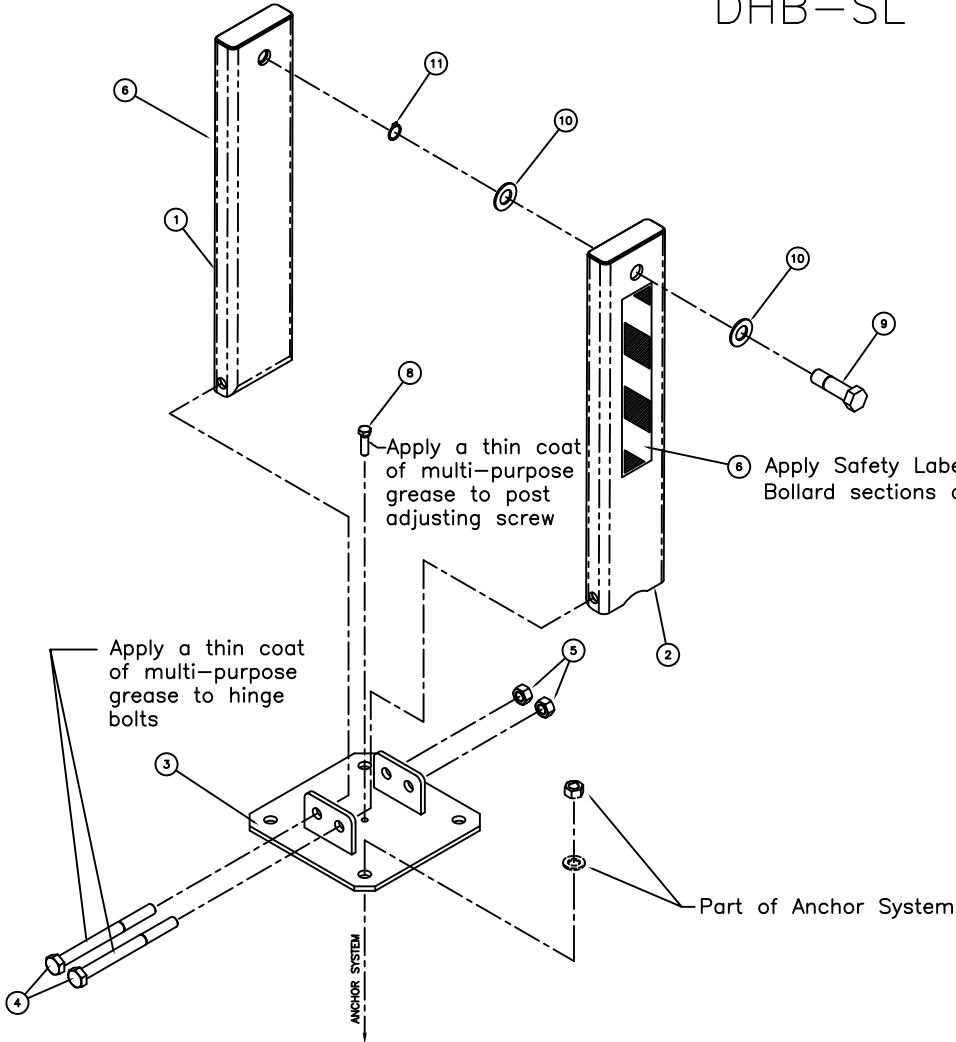
## SCREWLOCK DOUBLE POST HINGED BOLLARD (DHB-SL)

1. Verify that all Screwlock Double Post Hinged Bollard parts are in the shipment package as shown on the "Bill of Material".
  2. Provide Screwlock Double Post Hinged Bollard Anchor System (see included Anchor System Drawing-BAS) of your choice at a location to suit your specific needs.
  3. Install SDPHB Base (Item 3) true and level on your selected Anchor System using the flat washers and hex nuts included in your Anchor System Kit. Use S.S. shims to level if needed. Torque hex nuts to Minimum 100 ft-lbs for Anchor Systems CPAS and ESAS. Torque hex nuts for other Anchor Systems to Manufacturers Specification.
  4. Install SDPHB Screw Post and SDPHB Nut Post (Item 1&2) to SDPHB Base (Item 3) using Hinge Bolts (Item 4) and Hex Nuts (Item 5) as shown. Tack Weld Hex Nuts to Hinge Bolts or Chisel Hinge Bolt Threads such that Hex Nuts cannot be easily removed.
  5. Install Captive Lock Screw (Item 9) thru UP Position SDPHB Screw Post (Item 2), with Washers (Item 10) and Retaining Ring (Item 11) positioned as shown.
  6. With Bollard Posts (Items 1&2) in the UP Position, Use a Standard Fire Hydrant Wrench or 1-1/2" Hex Head Wrench to tighten snug Captive Lock Screw (Item 9) into SDPHB Nut Post (Item 1).
  6. Install the four Labels at the locations shown.
  7. Install Post Adjusting Screw (Item 8) in threaded hole in center of DPHB Base (Item 2). Adjust Screw to keep DPHB Posts (Item 1) from rocking while in upright Padlocked position.
  8. Check the functional operation of the Hinged Bollard Posts.
- \* Note: S.S. shims, tools, grease, and padlocks are not provided.

<b>SCREWLOCK DOUBLE POST HINGED BOLLARD</b> <b>ASSEMBLY DRAWING</b>		THIRD ANGLE PROJECTION 	<b>TrafficGuard®</b> P.O. Box 201, Geneva, IL 60134 Bus: 877-727-7347 Fax: 800-814-7194
Do not scale from drawing		Action by	Drawing Name <b>SDPHBA2</b>
Design WZ Draw CJD	Size <b>D</b>	Assembly Shipping Weight 84 Pounds	Drawing Number <b>SDPHBA2</b>
300 South Riverside Av., Aurora, IL 60009 Bus: 800-800-0000 Fax: 800-800-1007	Rev. by Date	Description	Scale: 3"=1' Drawing Date: 4-1-2003 Sheet: 2 of 2 Drawing dimension = 34" x 22"

This Drawing shall not be used nor reproduced except when authorized in writing by TrafficGuard.

# DHB-SL



BILL OF MATERIAL			
ITEM	PART #	DESCRIPTION	QTY.
1	SDPHBF1	SDPHB NUT POST	1
2	SDPHBF2	SDPHB SCREW POST	1
3	SDPHBF3	SDPHB BASE	1
4	0010	#3/4" x 8" HEX HEAD HINGE BOLT - 18-8 SS	2
5	0006	#3/4" HEX NUT - 18-8 SS	2
6	0107	SAFETY LABEL 3" x 12"	2
8	0011	#1/2" x 1 1/2" HEX HEAD CAP SCREW - 18-8 SS	1
9	2010	CAPTIVE LOCK SCREW - SS	1
10	0012	#1" FLAT WASHER - SS 18-8	2
11	0013	#1" EXTERNAL RETAINING RING - TYPE PH15-7 MO SS	1

### General Specifications and Notes for all Parts and Weldments

- All Steel Work shall conform to the AISC "Specification for the Design, Fabrication and Erection of Structural Steel for Buildings" - Latest Edition unless noted on the drawing.
- All Welding shall be performed by qualified welders and shall conform to the American Welding Society ANSI/AWS D1.1- Latest Edition of the Structural Welding Code - Steel.
- All Material shall be new and shall be as noted on the drawing and/or in the Bill of Material. SS indicates Stainless Steel and HDG indicates Hot Dip Galvanized.
- All Painting Work shall conform to the manufacturer's specification and installation instructions and the SSPC (Steel Structures Painting Council) and as noted on the drawing.
- All hole center dimensions shall have a tolerance of 1/16 inch; and other dimensions shall have a tolerance of 1/8 inch; unless noted on the drawing.
- All work shall be packaged and shipped per specific instructions by PARS Direct.

<b>SCREWLOCK DOUBLE POST HINGED BOLLARD</b> <b>ASSEMBLY DRAWING</b>		 THIRD ANGLE PROJECTION <small>Do not scale from drawing</small>	<b>TrafficGuard®</b> <small>P.O. Box 201, Geneva, IL 60134          Bus: 877-727-7347 Fax: 800-814-7194</small>
Design	WZ	Size	D
Draw	CD	Assembly Shipping Weight	84 Pounds
Rev.	by	Date	Description
1	wcz	1.28.10	Safety Label replaces arrows
Checked	WZ	Scale	3"=1'
Drawn	CD	Drawing Date	4-1-2003
Sheet			2 of 2

This Drawing shall not be used nor reproduced except when authorized in writing by TrafficGuard. Copyright 2003

LEVELING BOLT INSTRUCTIONS:

1. START 1/2" (13) X 1 3/4" 18-8 STAINLESS STEEL HEX IN CENTER HOLE OF BASE PLATE.  
(THREADS HAVE BEEN LEFT PAINTED FOR A TIGHT FIT)
2. TURN BOLT SLIGHTLY THROUGH BASE.
3. INSTALL POSTS AND LOCKING UPRIGHT POSITION.
4. BEGIN RAISING LEVELING BOLT WITH WRENCH UNTIL CONTACT IS MADE WITH POSTS.  
RESULTS WILL BE A STABLE SET OF POSTS.

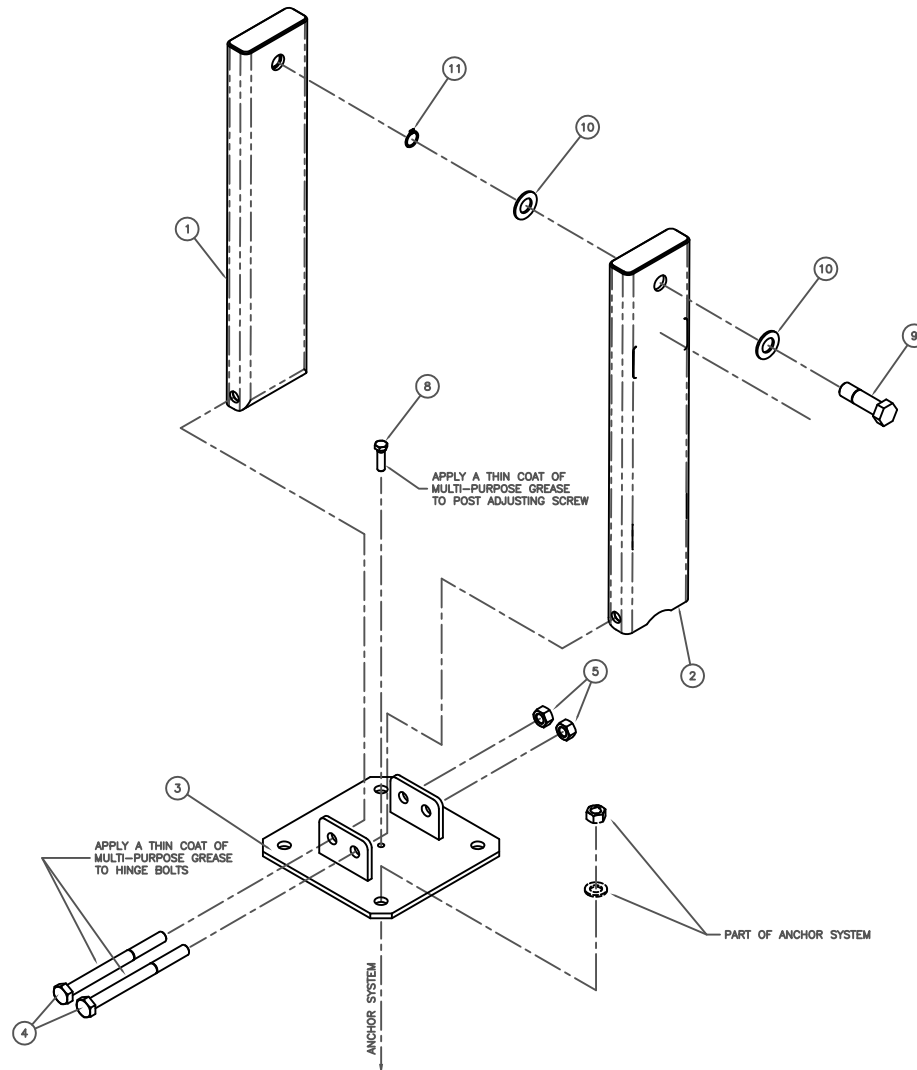
TrafficGuard®

"Authorities on Limiting Access"

P.O. Box 201, Geneva, IL. 60134

877-727-7347

www.trafficguard.net

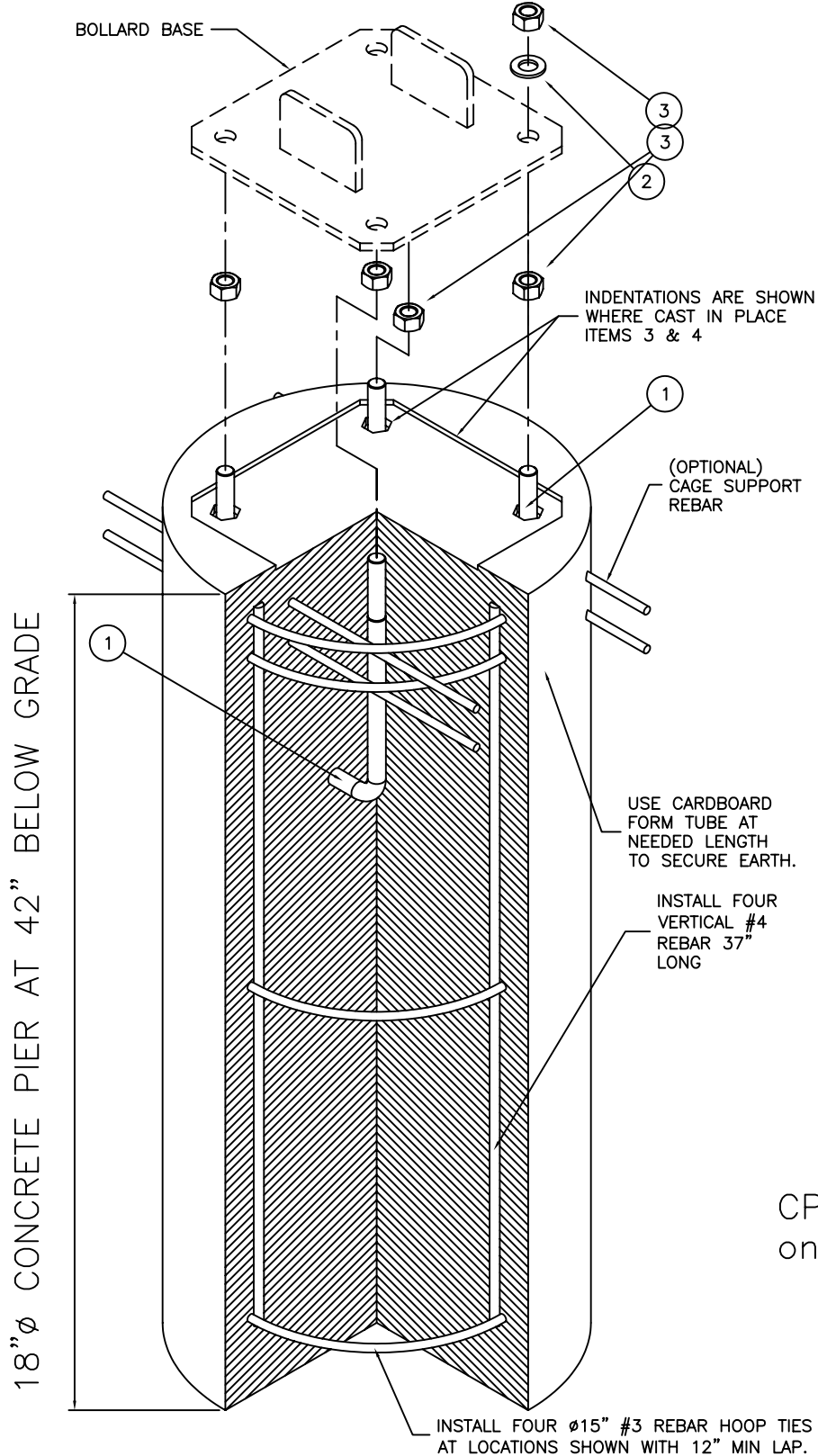


# BILL OF MATERIAL

ITEM	PART #	DESCRIPTION	QTY.
*	9001	CPAS KIT - INCLUDES THE FOLLOWING PART NUMBERS	*
1	0002	Ø3/4" x 12" TYPE L ANCHOR BOLT-H.D.G.	4
2	0007	Ø3/4" TYPE A FLAT NARROW WASHER GALVANIZED STEEL	4
3	0006	Ø3/4" HEX NUT GALVANIZED STEEL	8

NOTE: CONCRETE, FORM AND REBAR PROVIDED BY OTHERS

FOR MODELS:  
 HDHB  
 LPHDHB  
 DHB  
 DHB-SL



CPAS Included  
only if ordered

CONCRETE PIER ANCHOR SYSTEM (CPAS)