



INSTALLATION DETAILS

FOR RP3500 SERIES KEY LOCK REMOVABLE BOLLARDS

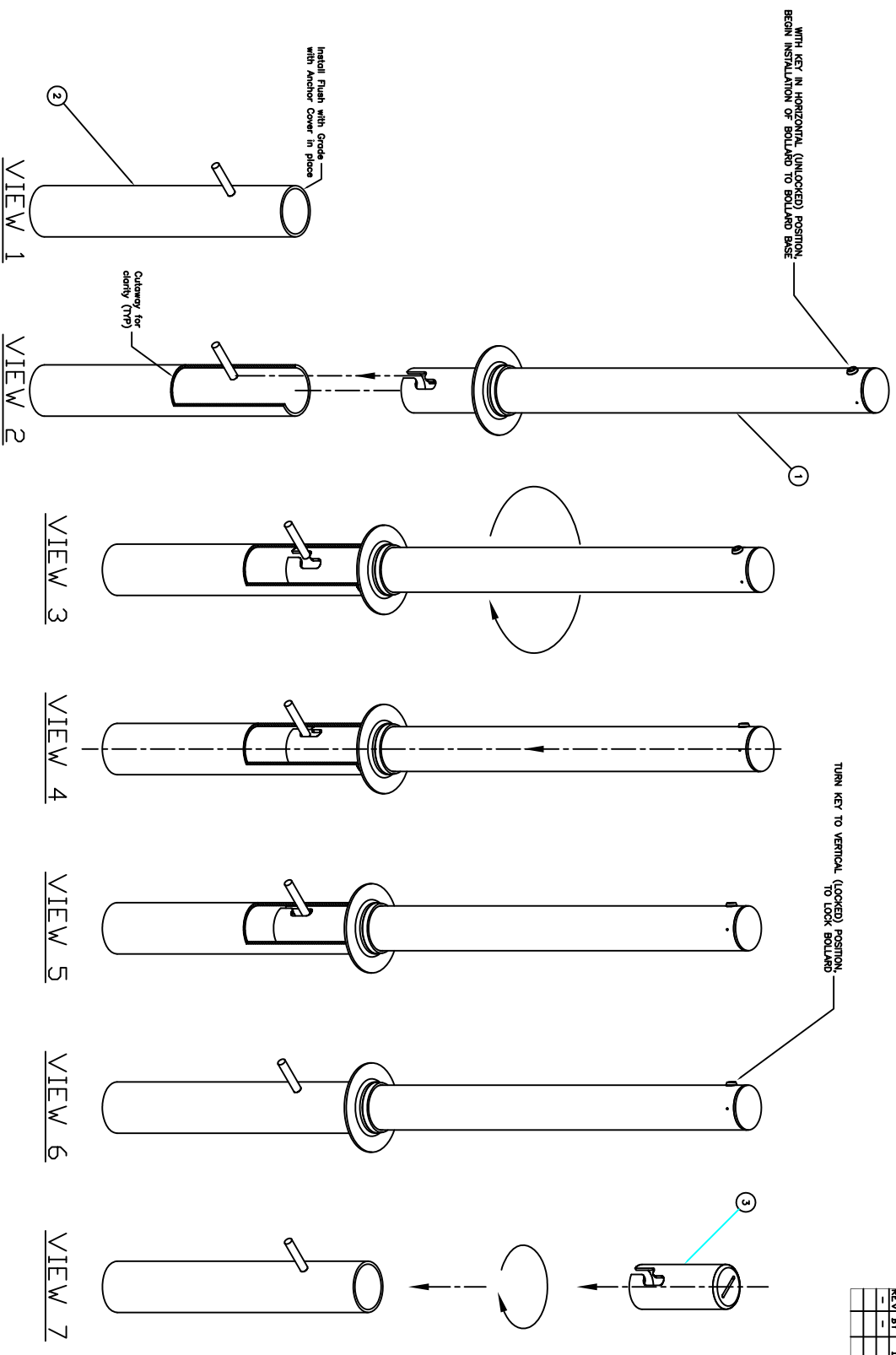
- 1 NEVER ATTEMPT TO PLACE THE BOLLARD INTO THE GROUND SLEEVE WHILE IN THE LOCKED POSITION.**
- 2 PAY CAREFUL ATTENTION** to the placement of the location of the ground sleeve latch pin – this determines the location of the lock at the top of the post.
- 3 INSTALLATION OF A SMALLER FOUNDATION** than that specified may reduce the overall impact capacity of the TrafficGuard Bollard System.
- 4 TO PROTECT AGAINST A TRIP HAZARD** insert the galvanized ground sleeve filler piece at all times the bollard is removed from the ground sleeve insert.
- 5 PROPER DRAINAGE IS CRITICAL** to the life of the bollard and the locking system. You must keep water from standing in the hole.

IF YOU HAVE ANY CONCERNS OR QUESTIONS

before beginning the installation please call **TRAFFICGUARD DIRECT 877-727-7347 TOLL FREE.**

REV	BY	DATE	DESCRIPTION

ZE Job# 05-139



GENERAL SPECIFICATIONS AND NOTES FOR ALL PARTS AND WELDMENTS

1. REMOVE ALL BURRS AND SMOOTH SHARP EDGES.
2. REMOVE ALL OIL AND CLEAN WITH THINNER PRIOR TO PAINTING. ALL PAINTING SHALL CONFORM TO THE SPECIFICATION ON DRAWING "SP01".
3. PRIME ALL SURFACES WITH ONE COAT OF GRAY CORLAR EPOXY PRIMER 9345 WITH A DRY FILM THICKNESS OF 1.0 MILS.
4. PAINT ONE FINISH COAT OF DUPONT YELLOW MARON 5000 3.5 VOC COLOR #H08B224HW IN A CROSS-COAT FASHION.
5. LABELS (IF REQUIRED) WILL BE INSTALLED BY THE CUSTOMER AND PROVIDED BY TRAFFICGUARD DIRECT, UNLESS OTHERWISE DIRECTED.
6. ALL STEEL WORK SHALL CONFORM TO THE AISC SPECIFICATION FOR THE DESIGN, FABRICATION AND ERECTION OF STRUCTURAL STEEL FOR BUILDINGS, LATEST EDITION.
7. ALL WELDING SHALL BE PERFORMED BY QUALIFIED WELDERS AND SHALL CONFORM TO THE AMERICAN WELDING SOCIETY AWS/AWS D1.1 LATEST EDITION.
8. ALL WELDMENTS SHALL BE SETBACK AND SHOWN AS NOTED ON THE DRAWINGS AND/OR IN THE BILL OF MATERIAL.
9. ALL WELDMENTS SHALL BE PROPERLY PACKAGED TO AVOID DAMAGE AND SHIPPED PER SPECIFIC INSTRUCTIONS BY TRAFFICGUARD DIRECT.
11. ALL WORK SHALL BE PROPERLY PACKAGED TO AVOID DAMAGE AND SHIPPED PER SPECIFIC INSTRUCTIONS BY TRAFFICGUARD DIRECT.

TrafficGuard® Direct
 P.O. Box 201, Geneva, IL 60134
 www.trafficguard.net
 Bus: 817-727-7347 Fax: 800-814-7194

ITEM	QTY	DESCRIPTION
1	1	ANCHOR COVER WELDMENT
2	1	ANCHOR POST WELDMENT
3	1	POST WELDMENT

ASSEMBLY
 USED IN: RP-3503
 DATE: 12-22-05
 SCALE: 1:1
 DRAWN BY: WKC
 CHECKED BY: WKC
 DATE: 12-22-05
 1 of 1

ROUND POST CONCRETE ANCHORAGE SYSTEM

DESIGN AND CONSTRUCTION DATA SCHEDULE

1. THE DESIGN LOAD IS A STATIC LOAD LOCATED AT 27 INCHES ABOVE GRADE THAT SHOULD CAUSE FAILURE OF THE BOLLARD.
2. THE EARTH PRESSURE VALUE IS SHOWN AT DESIGN LOAD AND THE OWNER SHOULD VERIFY THAT THE EARTH IS ADEQUATE.
3. OTHER ANCHORAGE SYSTEMS MAY CAUSE PREMATURE FAILURE OF THE BOLLARD BY ROTATION OF ANCHORAGE.
4. FOR RPT & RPL FOUNDATION DETAILS USE CORRESPONDING PIPE OD SIZE. IE: RP3506 = RPT6601 OR RPL6.
EARTH PRESSURE MAXIMUM $Q = 3888 \text{ P} / \text{DB}(A+B)$

BOLLARD MODEL	DESIGN LOAD P	BOLLARD Fb PSI	EARTH Q MAX	PIER HT. C	VERTICAL REBAR		NO. HOOP REBAR	PVC DRN LENGTH	PIER CONCRETE	FRENCH DRAIN	PIER DIAMETER	DIMENSION	
					LENGTH	QTY						A	B
RP3501	3000 #	47093 PSI	2204 PSF	42 INCH	40 INCH	4	6 EACH	18 INCH	6 Cu Ft	0.5 Cu Ft	18 INCH	7 INCH	14 INCH
RP3503	3000 #	47093 PSI	2204 PSF	42 INCH	40 INCH	4	6 EACH	18 INCH	6 Cu Ft	0.5 Cu Ft	18 INCH	7 INCH	14 INCH
RP3504	6000 #	50467 PSI	4408 PSI	42 INCH	40 INCH	4	6 EACH	18 INCH	6 Cu Ft	0.5 Cu Ft	18 INCH	7 INCH	14 INCH
RP3504	6000 #	50467 PSI	2667 PSI	54 INCH	52 INCH	4	7 EACH	30 INCH	8 Cu Ft	0.5 Cu Ft	18 INCH	9 INCH	18 INCH
RP3505	10000 #	49541 PSI	4444 PSI	54 INCH	52 INCH	4	7 EACH	30 INCH	8 Cu Ft	0.5 Cu Ft	18 INCH	9 INCH	18 INCH
RP3505	10000 #	49541 PSI	3600 PSI	60 INCH	58 INCH	4	8 EACH	36 INCH	9 Cu Ft	0.5 Cu Ft	18 INCH	10 INCH	20 INCH
RP3505	10000 #	49541 PSI	2975 PSI	66 INCH	64 INCH	4	8 EACH	42 INCH	10 Cu Ft	0.5 Cu Ft	18 INCH	11 INCH	22 INCH
RP3506	15000 #	47647 PSI	3750 PSI	72 INCH	70 INCH	4	9 EACH	48 INCH	11 Cu Ft	0.5 Cu Ft	18 INCH	12 INCH	24 INCH
RP3506	15000 #	47647 PSI	3195 PSI	78 INCH	76 INCH	4	10 EACH	54 INCH	12 Cu Ft	0.5 Cu Ft	18 INCH	13 INCH	26 INCH
RP3506	15000 #	47647 PSI	3240 PSI	60 INCH	58 INCH	8	8 EACH	36 INCH	25 Cu Ft	1.6 Cu Ft	30 INCH	10 INCH	20 INCH
RP3506	15000 #	47647 PSI	3333 PSI	54 INCH	52 INCH	8	7 EACH	30 INCH	32 Cu Ft	1.8 Cu Ft	36 INCH	9 INCH	18 INCH
-	-	-	-	-	-	-	-	-	-	-	-	-	-
-	-	-	-	-	-	-	-	-	-	-	-	-	-

This Drawing shall not be used nor reproduced except when authorized in writing by TrafficGuard Direct.

<h2 style="margin: 0;">TrafficGuard [®] Direct</h2> <p style="margin: 0; font-size: small;">www.trafficguard.net P.O. Box 201, Geneva, IL. 60134 Bus: 877-727-7347 Fax: 800-814-7194</p>		<p style="margin: 0; font-size: x-small;">NAME: RP ANCHORAGE</p> <p style="margin: 0; font-size: x-small;">1. DO NOT SCALE FROM DRAWING 2. UNITS ARE IN INCHES UN. 3. DIMENSIONING BASED ON ASME Y14.5M-1994</p>		<p style="margin: 0; font-size: x-small;">USED ON</p> <p style="margin: 0; font-size: x-small;">0.XX = ± 0.1 0.XXX = ± 0.06 ANGULAR = ± 1° FRACTION = 1/16</p>	<p style="margin: 0; font-size: x-small;">ACTION DESIGN</p> <p style="margin: 0; font-size: x-small;">DRAWING: CJD CHECKED: WKZ</p>	<p style="margin: 0; font-size: x-small;">BY WKZ</p> <p style="margin: 0; font-size: x-small;">DRAWING NUMBER: RP-3500-B01</p>	<p style="margin: 0; font-size: x-small;">SCALE: NTS</p> <p style="margin: 0; font-size: x-small;">DATE: 10-23-06</p> <p style="margin: 0; font-size: x-small;">COPYRIGHT: 2006</p>	<p style="margin: 0; font-size: x-small;">SIZE: 11x17</p> <p style="margin: 0; font-size: x-small;">SHEET: 2 of 2</p>
---	--	--	--	--	---	--	---	---